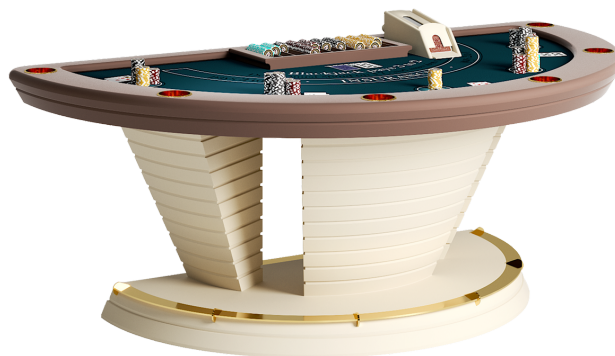


# NAPOLEON Blackjack Table

LE.GT.BJ

---



## Description

NAPOLEON is a table for the fascinating Blackjack game. Designed through an original style and a captivating aesthetic. The entire wooden structure is adorned with sophisticated stainless steel inserts, and the cloth is customizable both in color and in layout. All these elements are harmoniously combined in order to create a furniture endowed with great beauty and flawless functionality.

Designed by Pino Vismara

Year 2017

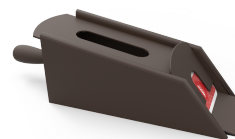
## Extra Accessories:



Aluminum chips case  
500 chips/2 decks of cards/  
5 dices



Ebony Makassar Box  
500 chips/2 decks of cards/  
5 dices

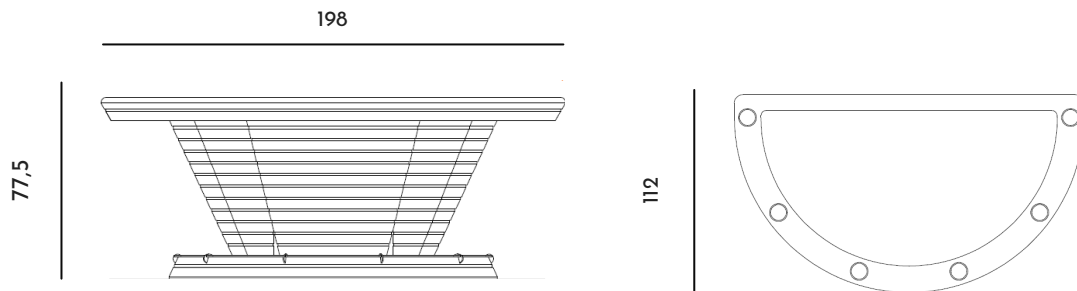


Sabot for 4 decks of cards

# NAPOLEON Blackjack Table

LE.GT.BJ

---



## Materials:

Structure: lacquered MDF

Cloth: printed microfiber

Metal details: steel

## Finishes:



Lacquers

14 Colours Available



Cloth

Available in all Pantone



Metal

4 finishes Available